







## Cornwell Close, Buntingford, SG9 9GQ

Westwood Leber are delighted to bring to the market this well-presented two bedroom end of terrace home is located in the sought-after Cornwell Close, offering a peaceful residential setting while remaining conveniently close to local amenities.

The property is presented in excellent condition throughout, featuring a bright and spacious living room, a well-appointed kitchen and a convenient ground floor cloakroom. Upstairs, the first floor offers two generously sized bedrooms and a modern family bathroom.

Externally, the home benefits from a well-maintained private garden, ideal for both relaxation and entertaining, along with the added advantage of allocated parking.

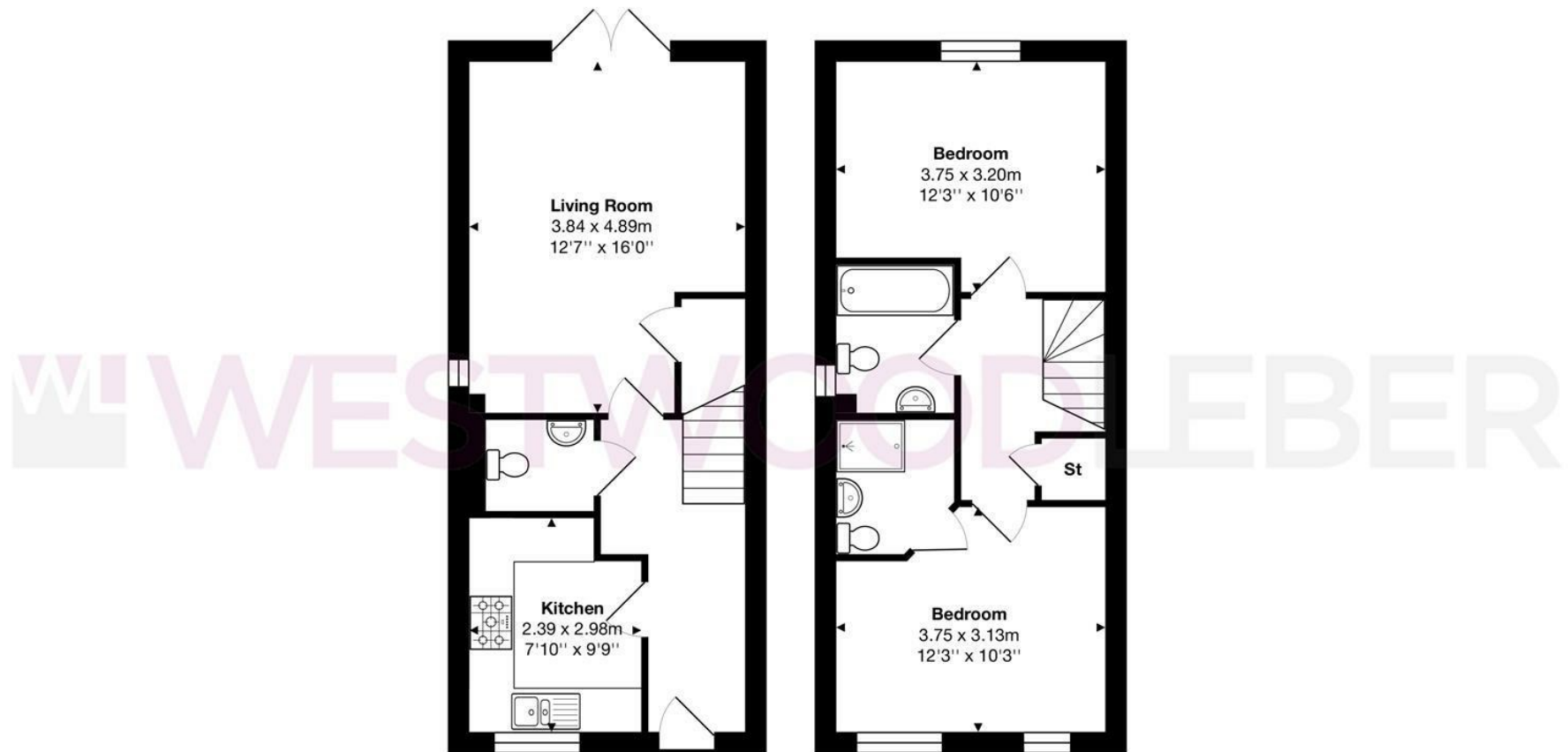
Perfectly suited to first-time buyers, downsizers or investors, this attractive home combines comfort, practicality and location, all within easy reach of Buntingford High Street, local schools and transport links.

An early viewing is highly recommended to appreciate all this home has to offer.



 WESTWOODLEBER

 WESTWOODLEBER  
LET US GUIDE YOU HOME



Total Area: approx. 70.5 m<sup>2</sup> ... 759 ft<sup>2</sup>

THE FLOORPLAN IS FOR ILLUSTRATIVE PURPOSES ONLY AND IS NOT TO SCALE.

Measurements and features are approximate and may differ from the actual property. Verify all details independently; no liability is accepted for errors or omissions.

Property marketing provided by [www.fotomarketing.co.uk](http://www.fotomarketing.co.uk)



















